



AUREA | STONE

FABRICATION & INSTALLATION GUIDE



AUREA | STONE



01	INTRODUCTION AUREA STONE ADVANTAGES APPLICATIONS SLAB INFORMATION
05	COMPLETE INSPECTION OF PRODUCT VISUAL INSPECTION OF SLABS AUREA DINERGY & DIVINE BOOK MATCH STANDARD AUREA STONE SLAB LABELS
09	RECOMMENDATIONS FOR SLAB STORAGE IN FABRICATION SHOPS A-FRAMES VERTICAL STORAGE RACKS FOR SLABS PROPER MATERIAL HANDLING OF AUREA STONE BASIC DIAMOND TOOLING & ASSOCIATED POWER TOOLS ADDITIONAL RECOMMENDED FABRICATION EQUIPMENT BASIC SAFETY EQUIPMENT STANDARD SAFETY PRACTICES AND PROCEDURES FOR FABRICATORS
12	TEMPLATING JOB LAYOUT & MEASUREMENT DIGITAL TEMPLATING MANUAL TEMPLATING INFORMATION TO GATHER FROM HOMEOWNER ADDITIONAL SUPORT REQUIREMENT OVERHANG/CANTILEVER REQUIREMENTS RECOMMENDED SUPPORT MATERIAL FOR CABINETS
15	FABRICATING AUREA STONE LAYOUT DETERMINE SEAMS LOCATIONS PROPER VEINING/COLOR MATCHING PROPER CUTTING CUTOUTS LAMINATIONS POLISHING/EDGE DETAIL
21	INSTALLATION AUREA STONE SEAMS ADHESIVE SEAMS INSTALLATION OF BACKSPLASH MATERIALS WALL APPLICATIONS
25	CARE & MAINTENANCE
26	CERTIFICATIONS
27	WARRANTY

THE MOST REALISTIC MATCH TO NATURAL MARBLE

Aurea, or divine proportion, is often considered as the ultimate expression of beauty.

With Aurea Stone we exemplify this perfection, through the most realistic match to natural marble, which brings beauty, balance and harmony in art and design to your life.

Aurea Stone is perfect for an extensive range of interior commercial and residential applications, such as kitchens, spacing on furniture cladding, bathrooms, flooring, wall or furniture cladding, reception counters or bar tops. These surfaces are not suitable for exterior use, or areas where resins may be exposed to UV.

This Fabrication & Installation guide provides professionals with current and relevant information regarding Aurea Stone quartz, as well as best practices, enabling architects and designers to oversee their projects with confidence.



ADVANTAGES

Our continuous technology advances, demanding quality standards and quality control have resulted in the development of a unique tool: **Phi Technology**. It is a one-step, ambient temperature, ambient pressure process that both incorporates and exceeds the standard manufacturing method and mixing composition that dominates the engineered stone industry, culminating in an exclusive natural looking stone that has been pursued for years, with results incomparable to competitors.

Which raises the question, what makes Aurea Stone so remarkably different?



TRANSLUCENCY

Like natural stone patterns, our veins show a unique translucent transparency that will make you believe they are real.

BEAUTY OF NATURAL STONE

The incredible shifting of shades and movement inside our patterns make them so unique that they are rivaled only by natural stone.

EVEN STRONGER THAN GRANITE

Phi Technology produces a notably enhanced surface, suitable for any application, and with much better durability than any other material you have worked with.

WHITEST

The way Aurea Stone is produced, together with its Phi Technology, provides a grain-less surface with an astonishing white background, which is two full shades whiter than competitors.

BETTER CONSISTENCY

Any application is possible, not only with the look of a high-end natural stone, but with a reliably consistent appearance and price, for any quantity needed. Perfect for projects large or small.

LESS WATER ABSORPTION & STAINS

Nano Enhancement of Surfaces (NEOS), is a new high-performance stain and substance repellent technology developed for Aurea Stone surfaces.

EASY TO CUT AND MANUFACTURE

Our material is very easy to cut and manufacture, and what's more important, you can use the entire slab with no waste.

APPLICATIONS

Quartz products are in high demand impart to their natural beauty as well as natural strength and durability. Quartz may be used in both horizontal and vertical applications to include Kitchen Countertops, Wall Cladding, Vanity Tops, and Retail/Commercial Countertops to name a few. Aurea Stone quartz surfaces, come with a 15-year limited product warranty both residential and commercial. Aurea Stone slabs are available in 2 cm or 3 cm thickness. Please visit aureastone.com for full warranty details.

- Kitchen Countertops
- Vanity Tops
- Furniture/Table Tops
- Flooring
- Reception & Conference Room Tables
- Wall Cladding
- All Retail/Commercial Applications
- All Aurea Stone Applications are Indoor Only.

AUREA STONE: SLAB INFORMATION

SIZE

The slab dimensions of Aurea Stone's quartz surfaces are: **JUMBO SLAB:** 126" x 63" or **ORIGINAL SLAB:** 120" x 56.5"
These options give fabricators the flexibility to maximize their utilization of the material.

JUMBO SLABS

1600mm/63"



3200mm/126"

ORIGINAL SLABS

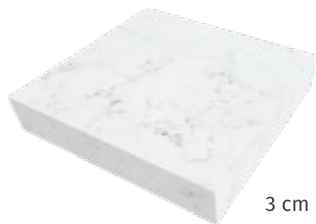
1400mm/56.5"



3000mm/120"

THICKNESSES

The slabs are available in two thicknesses: 3/4" and 1-1/4", to make possible a multitude of applications.



3 cm
1-1/4"



2 cm
3/4"

All colors are available in all sizes and thicknesses.

FINISH AVAILABLE

Art Collection: Polished

Sequence Collection: Silk & Polished

VISUAL INSPECTION OF SLABS:

A visual inspection for defects and color matching is essential when working with Aurea Stone. This should be made standard practice before cutting any material.

Complete the following steps to visually inspect slabs for defects:



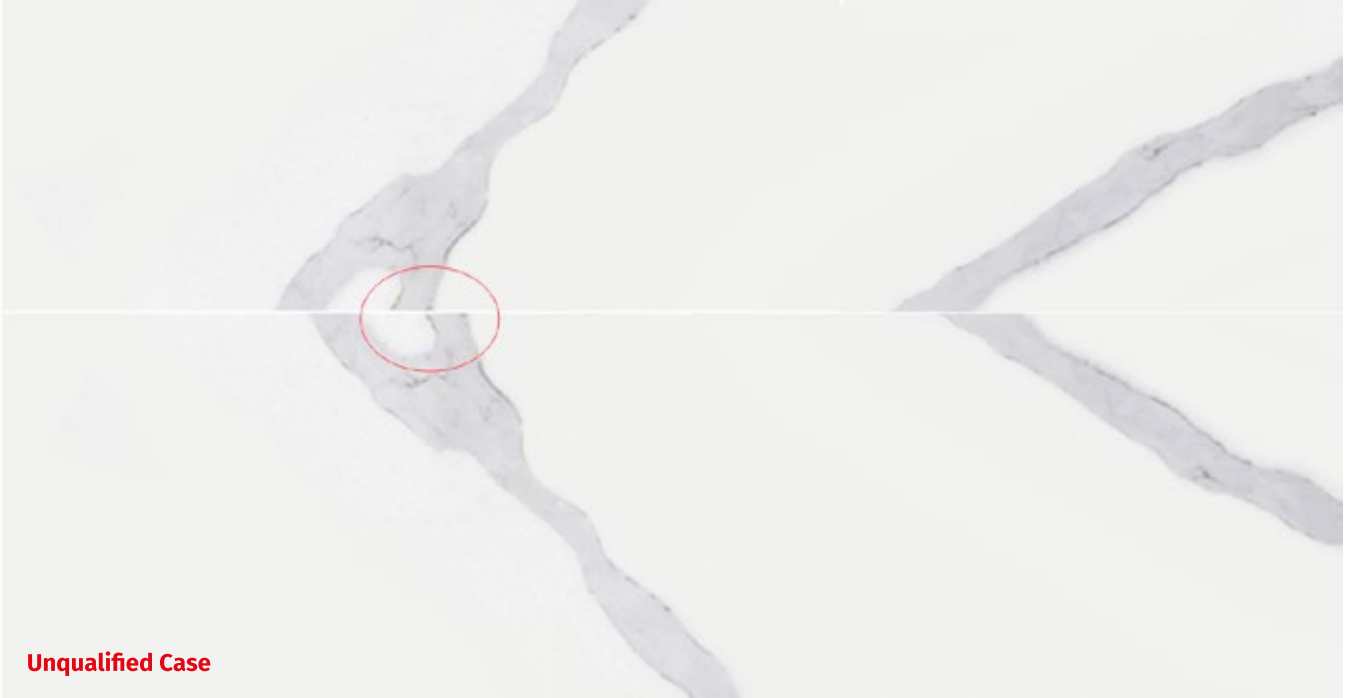
- Do not inspect slabs with the protective film on.
- Inspect both the front and the back of slabs for any defects.
- Look for any hairline cracks in the slab.
- All slabs should be checked for accurate color matching before fabrication, whether the layout calls for them to be seamed or unseamed.
- When book matching Dinergy or Divine patterns, make sure that the main veins match/line up 70 percent or more. Similarly, make sure that the third pair of veins match/line up 50 percent or more. When book matching veins, make sure veins have a similar direction and a similar shape.
- Check slabs for correct dimensions, warpage, irregular spots, or other defects that make the slab unacceptable for fabrication.
- Check for accurate color matching of all Aurea Stone colors, and the orientation/layout of pattern flow.

Please note: Once the fabricator has deemed a slab to be acceptable for fabrication and the slab is cut or machined in anyway, the slab cannot be exchanged. The fabricator is responsible for determining if the slabs are fit for fabrication. If they are not, they should be exchanged with their supplier. Aurea Stone will not accept claims for any of the above once the slab is modified or fabricated in any way.

AUREA DINERGY & DIVINE BOOK MATCH STANDARD

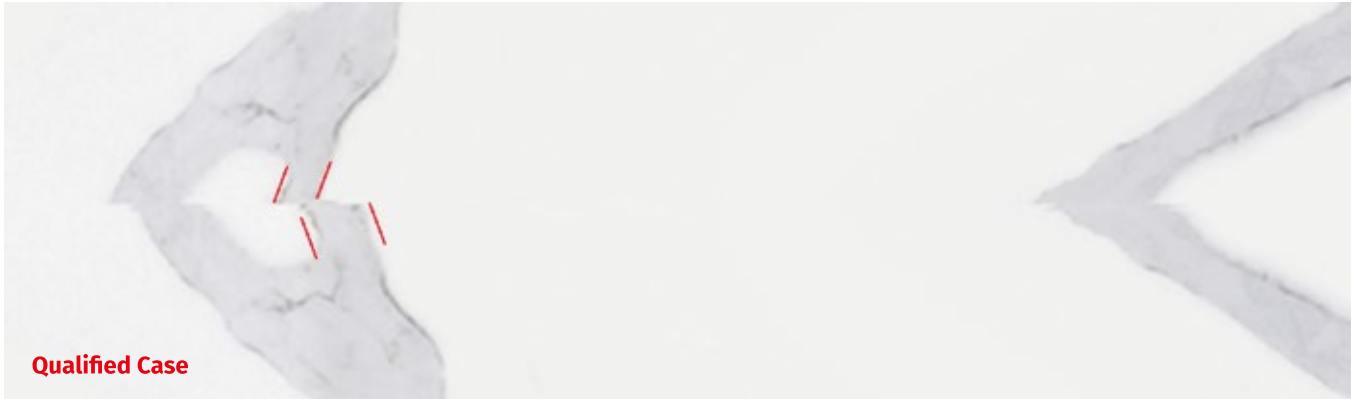
Examples of Qualified Book Matches for Aurea Stone:

When book matching: Make sure that the main veins match/line up 70 percent or more, and that the third pair of veins match/line up 50 percent or more. Keep in mind: The book match will not be 100 percent perfect as some variation in main vein pattern is normal.



FABRICATION GUIDE: COMPLETE INSPECTION OF PRODUCT

when book matched, 2 pairs of main veins connect area >70%, one pair main veins have different shape (mainly different width)



When book matched, the veins have both a similar direction and a similar shape.



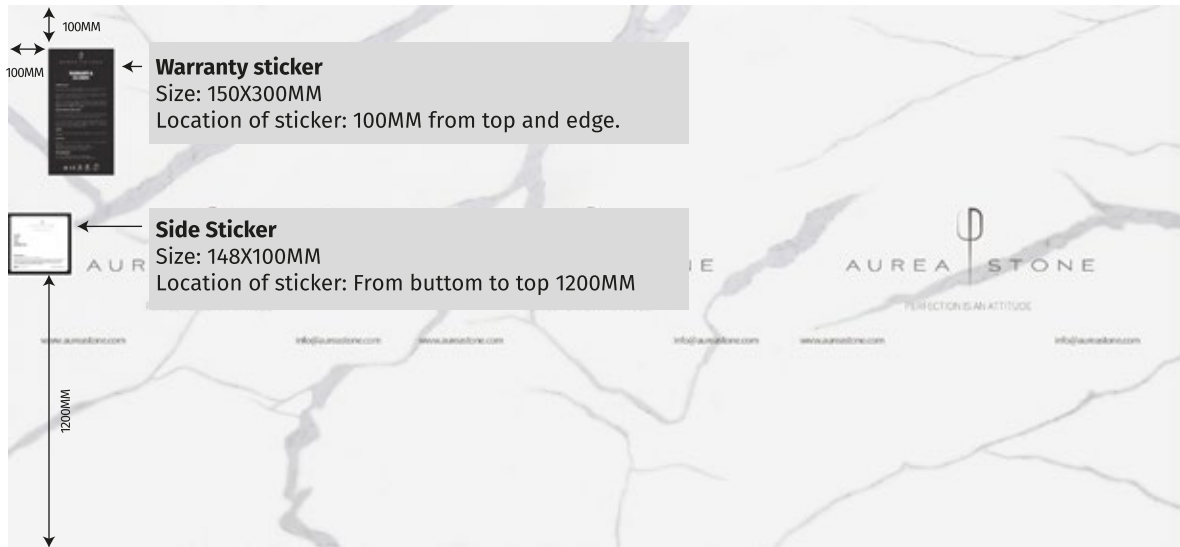
When book matched, the two slabs have the same shade of veins. We allow some of the veins to have the black lines inside the veins.



AUREA STONE SLAB LABELS

Standard Aurea Stone Label on Front of Slabs.

Each slabs will be put three stickers: **Warranty sticker, Slabs Edge Sticker, Tear off Paper**

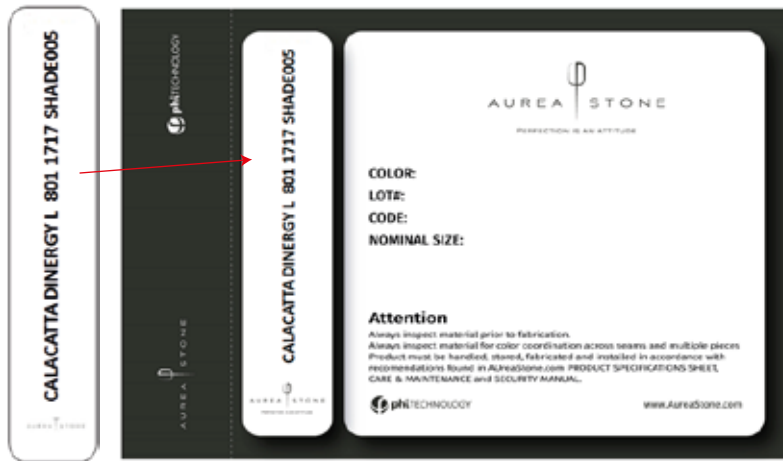


Tear off sticker and edge sticker information:

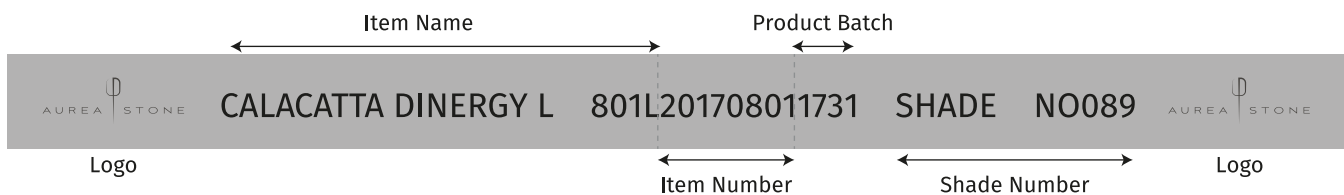
1. Item name
2. Item number
3. Production batch
4. Shade number

For example:

CALACATTA DINERGY L 801 1717 SHADE005 are on both stickers and they must be the same.



Standard Aurea Stone Label on the Back of Slabs



A-FRAMES:

The best way to store Aurea Stone slabs that are ready for fabrication or to be shipped to a job site is on an A-frame that is constructed of wood or metal. It is best that A-frame carts come with forklift receivers for loading and transportation.



- Double A-frames should have the same number of slabs on each side for proper balance and safety.
- Large double A-frame carts are usually 8' long by 43" wide with a load height of 60". The manufacturer-recommended capacity for large double A-frames is 4,400 lbs (2,200 lbs per side).
- Small double A-frame carts are usually 6' long by 43" wide with a load height of 48". The manufacturer-recommended capacity for small double A-frames is 4,400 lbs (2,200 lbs per side).
- Single-sided A-frames can also be used (these are great for box vans). The manufacturer recommended capacity for single-sided A-frames is 2,200 lbs. Make sure that material is always strapped to A-frame.
- For double A-frames: When more than one slab is stored on each side, slabs should be kept flat without any gaps to prevent warping. Make sure to strap slabs to the A-frame to prevent warping or flexing.

- Slabs should always be placed face to face and/or back to back to help prevent damage to the polished side of the slab.
- Aurea Stone should always be safely secured to an A-frame with straps whenever transported. Never attempt to move Aurea Stone on an A-frame if material is not banded or strapped. This applies to transportation in the fabrication shops and to transportation on trucks/vans.
- A-frames are acceptable for temporary storage but never for long-term storage.

VERTICAL STORAGE RACKS FOR SLABS:

Vertical storage racks are recommended when slabs require long-term storage to ensure the safety and reliability of the material. Vertical storage racks should be capacity rated, constructed of steel, and designed for quartz slab storage.



- Slab storage rack system generally come in 5' and 10' sections with 2" by 2" uprights (poles). Rubber-tipped uprights are also recommended. Some of these racking systems can be purchased as interlocking sets.
- Racks that are 5' usually come with eight (8) square uprights. The capacity varies based on the manufacturer, but a good rule of thumb for this racking system is for internally reinforced uprights (poles) to accommodate 6,800-9,000 lbs between the uprights (sets of poles), and to accommodate a 3,200-4,500 lbs load on each upright.
- Racks that are 10' usually come with 16 square uprights. The capacity varies based on the manufacturer, but a good rule of thumb for this racking system is for internally reinforced uprights (poles) to accommodate 23,700 lbs between the uprights or (sets of poles), and to accommodate an 11,800 lbs load on each upright.
- Keep in mind the weights or loads on the racking systems can vary by manufacturer. The numbers used in this fabrication guide are based on heavy-duty racking systems that provide high standards of safety.
- Slabs should always be placed face to face and/or back to back to prevent damage to the polished side of the slab.
- All slabs stored on these long-term storage racks should be covered with Aurea Stone protective plastic to avoid damage.
- The vertical slab storage racking system is for long-term storage of Aurea Stone.

PROPER MATERIAL HANDLING OF AUREA STONE:

- Never transport Aurea Stone Quartz horizontally.
- Horizontal storage of Aurea Stone adds stress to the material and causes hairline cracks that could lead to breakage.
- Heavy-duty carts/dollies should be used when moving material around your fabrication shop.
- Heavy-duty slab booms and slab-carry clamps should be used to move material around your shop when using an overhead crane or fork truck.
- All cutouts should be supported with 2" x 4"x 8' support rails when being transported for installation.
- Pneumatic vacuum suction cups can also be used to move slabs and finished material throughout the fabrication shop.
- We recommend that all suction cups be used with white rubber to prevent dark rings from appearing on the white translucent quartz.

The following tools are a minimum requirement for a professional fabricator to have on hand to fabricate Aurea Stone quartz. These tools can be purchased from a variety of suppliers in the United States.

BASIC DIAMOND TOOLING & ASSOCIATED POWER TOOLS:

- Diamond polishing pads (wet pads only). Preferred grits for fabrication are 50, 100, 200, 400, 800, 1500, 3000.
- Diamond Polishing Pads (Honed Finish). Preferred grits for fabrication are 100, 200, 400.
- Diamond cup wheels
- Diamond core bits
- Diamond contour blades (manual sink cutouts)
- Diamond turbo quartz blades (5" and 6" sizes)
- Diamond router bits (edge detail)
- Diamond bridge saw blades (Size will vary based on the horsepower of your bridge saw)
- Silicon carbide grinding wheels (less expensive than diamond cup wheels)
- Back-up pads, rigid and flexible (holder for polishing pads with 5/8-11 threads for polisher and grinder)
- Pneumatic polisher (0-4000 rpm)
- Electric grinder/polisher (variable speed of 2,800-11,000 rpm preferred)
- Water supply units for grinder and polisher if not supplied with unit

ADDITIONAL RECOMMENDED FABRICATION EQUIPMENT:

- Bridge saw with horsepower of 20 or higher
- Automatic edge profiler
- Computer numerical control (CNC) machine
- Waterjet
- Handheld edge profiling machine
- Fork truck
- Overhead crane
- Fabrication tables
- Air compressor
- Water supply source
- Stone carts/dollies
- A-frames/storage racks
- Slab clamps

BASIC SAFETY EQUIPMENT:

Quartz stone dust contains silica, which can be a serious health hazard if inhaled. Aurea Stone quartz should always be cut and polished with wet diamond tooling and proper ventilation throughout the shop and offices. Fabricator should always use approved dust masks, and eye, ear and foot protection when fabricating Aurea Stone.

The following list are basic safety equipment options.

- Safety first-aid kit
- Dust masks (indoor and silica rated)
- Safety glasses
- Solvent-resistant gloves
- Ear plugs
- Waterproof, steel-toed boots
- Waterproof apron or rain suit
- Leather gloves (recommended for moving sharp slabs)
- Ground Fault Interrupter (GFI) for electric tools in a wet environment

STANDARD SAFETY PRACTICES AND PROCEDURES FOR FABRICATORS:

1. Always wear protective clothing. Serious injury can occur if safety precautions are not followed in the fabrication shop or on the job site.
2. Fabricators should follow all safety instructions and warnings on all material safety data sheets (MSDS) for all products used in the shop.



3. Read and follow all manufacturers safety guidelines for all power tools and fabrication equipment used in the shop.

4. It is recommended that steel-toed safety boots be worn during the fabrication process, when handling or moving quartz products, and during installation at a job site.

5. Fabricators should always use eye protection. All fabricators should use Occupational Safety and Health Administration (OSHA)-approved eye protection. Failure to use eye protection can result in serious injury.

6. Fabricators should always use hearing protection when working with machinery and power tools. OSHA limits safe sound exposure to 85 decibels during an eight-hour period. Check with the manufacturers of all your equipment and power tools and adjust hearing protection accordingly. There are outside companies that can test the noise levels in your fabrication shop and suggest proper ear protection.

7. Because Aurea Stone recommends that our material be fabricated when wet, fabrication can create the potential for slip hazards. Floors should be sloped to trench drains, and all water should be drained away from the work area. **Additionally:**

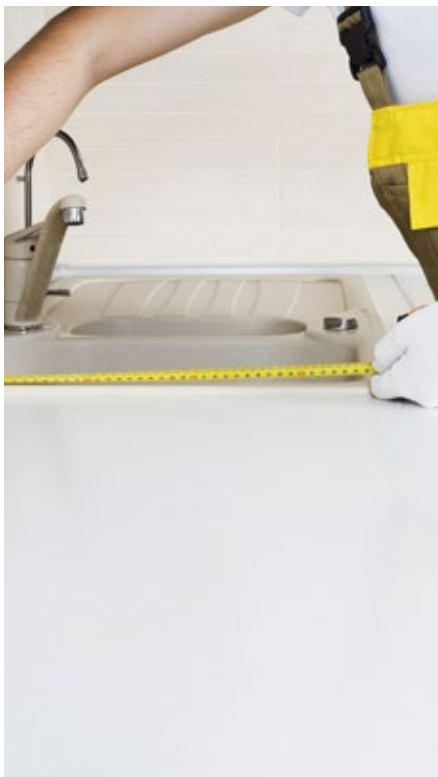
A.) All trench drains should be cleaned regularly of stone slurry to ensure good drainage for water flow.

B.) Work area floor should be squeegeed several times a day to eliminate standing water.

C.) Fabricators using electrical tools should make sure they are using a ground fault interceptor (GFI) and keep away from standing water. Fabrication shops should invest in cord drops from the ceiling as an electrical solution.

D.) Pneumatic tools (those powered by compressed air) are always recommended.

8. Check your state's OSHA guidelines to better understand all proper safety protocol.



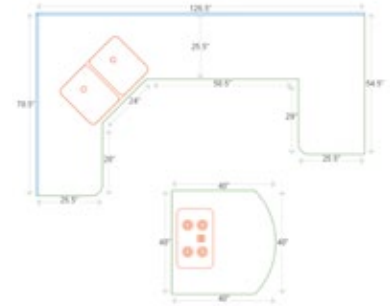
DIGITAL TEMPLATING:

Today there are many digital templating methods from which to choose. Digital templating is used to capture accurate countertop dimensions and configuration data. Digital templating has the advantage of being able to send/relay the digital information directly to compatible fabrication equipment, such as computer numerical control (CNC) machines, bridge saws and waterjets. These digital systems use lasers, digital cameras and point-to-point digitizers. Digital templating technology is a faster, more accurate and efficient way to measure jobs because information can be transferred digitally to your fabrication equipment.

MANUAL TEMPLATING:

Handmade fabrication templates are created to accurately transfer the measurements and configurations from the job site to the fabrication shop. The most common items used are thin plywood, luan strips and cardboard. Job drawings containing the specific job information and are very important to support the actual template.

It is important to capture all necessary information to accurately fabricate all aspects of the job, including sink and appliance centerlines, faucet hole locations, finished edges and overhangs. It is recommended that all appliances, sinks, cooktops, or any item that requires a cutout on the countertop be on site when the job is templated.



INFORMATION TO GATHER FROM HOMEOWNER:

- Choice of 2cm or 3cm material
- Name of Aurea slab selection
- Determine seam locations if needed
- Edge profile
- Backsplash
- Sink location
- Faucet location
- Appliance locations (i.e. cooktop/range, refrigerator, dishwasher)
- Location of additional items (i.e. soap dispenser, sprayer)
- Clarify inside corners (if using one piece of material for countertop, then use a 3/8-inch core bit for corners as internal corners must have a 3/8" radius at minimum; if using two pieces of material, use a square, two-piece seam)

Very important regarding cabinets:

Make sure that the cabinets are finished and installed properly. Fabricator must verify that all cabinets are level. The top of the cabinets must be true and flat with no more than a 1/16" slope over the span of 18". The cabinets must be adjoined to each other and secured to the immediate wall. All cutouts and seams must be properly supported; similarly, there should be extra, structural support around the dishwasher.

ADDITIONAL SUPPORT REQUIREMENTS:

Structures with support on four (4) sides. Structures supported on four sides do not require any additional support for both 2cm and 3cm material if the countertop depth is less than 26" and the countertop length is less than 118".

However, if the above dimensions are exceeded, support will be required every 36".

Structures with support on three (3) sides (i.e. dishwashers, frameless cabinets, desks, and lazy Susan's). Structures supported on three sides require additional support for both 2cm and 3cm material as follows:

- 2cm & 3cm material with countertop depths greater than 26" need support every 24".
- 2cm material with countertop depth less than 26" need support every 24".
- 3cm material with countertop depth less than 26" need support every 36".



FABRICATION GUIDE: TEMPLATING: JOB LAYOUT & MEASUREMENT

OVERHANG/CANTILEVER REQUIREMENTS:

- Overhangs cannot exceed 1/3 of the countertop depth and must have a minimum length of 24”.
- Material that is 2cm requires support every 24”.
- Material that is 3cm requires support every 36”.
- Overhang ratios require that two-thirds of the width/length of the material to be used be supported; one-third of the width/length of the material to be used can be unsupported (an overhang).
- No cutouts or cored holes are permitted on any overhangs.
- Additional support (i.e. support bars or 3/4” plywood) may need to be added to meet additional span requirements.
- Overhangs that exceed cantilever rules will need to add columns, corbels or legs to be properly supported as follows:

Overhang	No Support Needed	Corbels Required	Columns Required
2cm material	≤ 8”	> 8”	> 18”
3cm material	≤ 12”	>12”	> 24”

- Corbels should always be mounted to a stud for proper support of the material.

RECOMMENDED SUPPORT MATERIAL FOR CABINETS:

- Plywood, wood, medium density fiberboard and structural steel are the recommended support materials for cabinets that need additional support for Aurea Stone.
- Materials or products that are not moisture resistant, like oriented strand board and particle board, are not acceptable as support material.

The above information should be taken into consideration during the templating and layout/measuring process. This will help to prevent any problems during the fabrication and installation process. Not following the procedures in this fabrication guide voids any warranty provided by Aurea Stone Inc

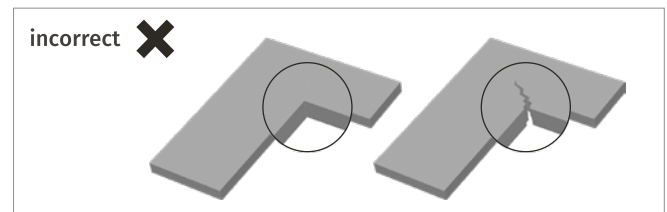
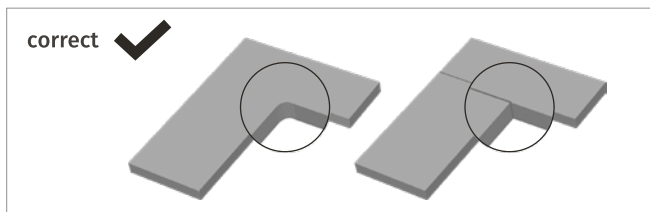
1. LAYOUT:

Before cutting Aurea Stone slabs, calculate the square footage, length, and width of material that will be needed to complete the project. This is very important when using Aurea Stone because each batch and slab are unique and have specific shades that need to be used for each job. Inaccurate measurements may create color match concerns and more material may need to be ordered. It is important to thoroughly inspect the slab for color, pattern and defects. Do not use material with visible manufacturing defects unless the layout/job allows you to work around them.

2. DETERMINE SEAM LOCATIONS:

During the layout process, determine all your seam locations. This is very important to ensure the optimum aesthetics of the material and the kitchen. Seams should never be placed in the following locations:

- Through the center of sink cutout.
- In places where there is direct sunlight.
- Above dishwashers located under the counter.



3. PROPER VEINING/COLOR MATCHING:

- Always inspect all material before fabrication. Aurea Stone replicates marble as it is a veined material that has a non-directional pattern. During the layout process, it is very important to use extra care with respect to your seam locations. Whether the material has a factory edge or a fabricated edge, the Aurea Stone vein distribution can be different throughout the slabs. Our veined patterns will require a more careful/specialized layout to provide the customer with a rich, aesthetic look.

- Color matching slabs before fabrication is very important as it is very normal for quartz slabs to have slight color variations between batches production cycles due to the complex blending of natural minerals and raw materials.

- If your job requires more than one slab, be sure to check the Aurea Stone label for the batch number and the shade number of the slabs. After inspecting all slab numbers, it is important to remove the protective plastic film to visually inspect slabs for color variation, color matching, and any defects before cutting material.

- During the layout process, remember to color match backsplashes as they must color match and have a similar vein pattern to the countertop.

- The layout process is a critical one in the fabrication of Aurea Stone as it directly impacts the beauty of the final product that is produced. A little extra attention during the layout process really showcases the beauty of Aurea Stone and can create endless beauty for the homeowner.

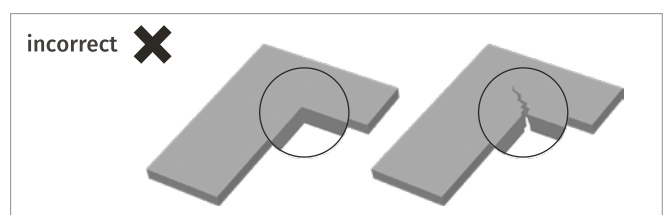
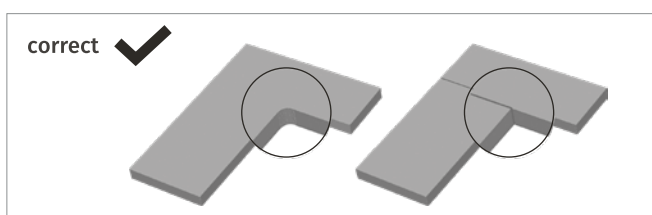
4. PROPER CUTTING:

- All equipment that is used to cut Aurea Stone should always be kept cool with a sufficient amount of water. **ALWAYS AVOID EXCESSIVE HEAT WITH ALL DIAMOND-CUTTING TOOLS.**
- The first cut of your Aurea Stone slab should be made along the largest part of the slab and then proceed to the shortest.
- When using a bridge saw, never plunge cut.
- Important: Never cut square corners when fabricating Aurea Stone. This can create stress points in the countertop and can result in cracking. **ALWAYS USE A DIAMOND CORE BIT FOR ALL CORNERS OR RADIUSSES.**
- Inside corners that are fabricated on a single slab must have a minimum of a 1/4" radius.
- Never use cross cutting when fabricating Aurea Stone countertops. Always use a diamond core bit to create your radius. **Please clarify:** This should always be used on inside corners, so any internal angled corner must have a radius. **NEVER CROSS CUT!**
- Remember that quartz slabs contain resin, which can cause warping or bowing depending on the weather and how it is stored. If warping or bowing does exist in the slab, the double-cutting technique should be used. First, cut the slab to half its thickness to relieve the tension and flatten out the slab. Then, proceed with the second cutting pass to finish the cut.

5. CUTOUTS:

This can be completed with several different types of equipment. A bridge saw can be used for straight cuts, but a radius needs to be cored with diamond core bits with no cross cutting. The same rules apply to CNC machines, which are also very popular. A waterjet can also be used with the proper abrasives and water pressure.

- L- or U-shaped countertops with inside corners should always be fabricated from a single slab and must have a minimum of a 3/8" radius. Always keep in mind that the larger the radius, the stronger the corner.
- If the distance between the cutout and the seam is less than 6", the seam needs to be supported. This can be achieved during the layout process by making sure that all seams are at a cross member of the base cabinet; otherwise, additional cross members need to be added.
- Internal cutouts on all corners should have a 1/4" radius at minimum.
- Cutouts for all drop-in sinks, cooktops, outlets, slide-in stoves, etc. should include an extra 1/8" from the edge to allow for expansion.
- Cutouts range from simple, core holes for faucets and soap dispensers to complex cutouts for specialized equipment. It is best to have all equipment on the job site during the installation process as this is the safest way to determine the shape and size of the core or cutout.
- Always refer to the manufacturer's recommendations when available.
- The customer should make the final decision regarding the location and the size of the cutout in their countertop and sign off on this.
- Additional support should be added to both ends of the cutout if the base cabinet cross bars are not within 3" of cutout.
- All hot cutouts (i.e. cooktops) require that 9-mil aluminum foil tape (heat tape) be used to prevent the transfer of heat to Aurea Stone quartz. Always follow manufacturer's guidelines.



6. LAMINATIONS:

Laminate edge refers to the process of gluing pieces of stone together to create a variety of edge profiles, including mitered edges, stacked edges, and drop edges. The lamination process is also used to create more sophisticated edge profiles.

Stacked Edges: An additional 1.5"-wide strip of material is cut during fabrication from the same slab. The piece is glued to the underside of the countertop along the front edge to create a thicker edge. Example: If you are using 2cm of material, it will create a 4cm or 1.5" edge. If a plywood substrate is required underneath your 2cm countertop for support, the laminated stacked edge also serves to hide the plywood from sight. This process can also be done with 3cm material.

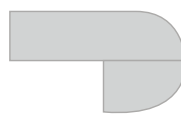
Examples of Lamination (stacked edges):



Laminated Flat Edge



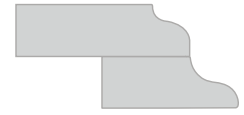
Laminated Half-Bullnose



Laminated Half-Bullnose



Laminated Dupont



Laminated Ogee + Dupont

Tip:

When laminating, it is important to make sure that the lamination piece is the full length of the top piece and that the corners are cut at 45 degrees. If for some reason the two laminated pieces must be joined, the joint must be cut at a 45-degree angle. The use of a mitered end cut reduces stress on the material that may cause stress fractures.

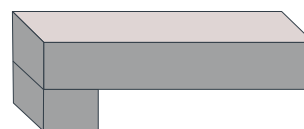
The lamination strip should be cut from the same slab as the countertop surface material to ensure a color match. When cutting the piece to be laminated, add the lamination piece size to your cutting measurements to ensure that a lamination strip of the correct length and color is available for the lamination process. A 45-degree corner joint is recommended to minimize the stress on the corners.

- Use full-length lamination pieces if possible.
- For long countertop runs where a joint may be required, make sure that the joint in the laminated piece is at 45 degrees to minimize stress points.
- Proper clamping is recommended every 3"-4" for a secure, tight bond.

Examples of Mitered and Butt Joints:



Square Mitered



Square Laminated

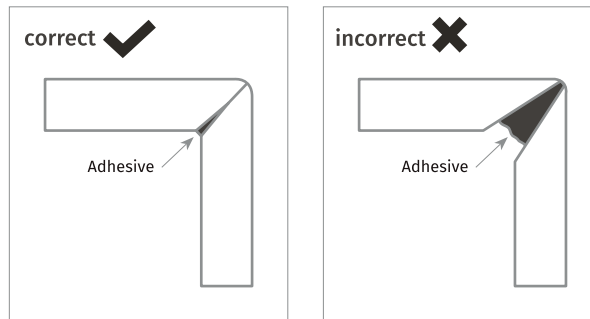
FABRICATION GUIDE: FABRICATING AUREA STONE

Mitered Edge:

A mitered edge is one with a perfect, 90-degree angle. This is created by joining two pieces of Aurea Stone quartz, each with a 45-degree angle. This is typically done with 2cm material. The longer the apron, the harder it is to hide the seams because it is more difficult to clamp. It is never recommended to have a mitered edge over 4" unless a special support is added.

Adhesives:

We recommend that a cartridge-style acrylic or epoxy that is already color matched for Aurea Stone quartz be used. Aurea Stone quartz is translucent, so solid colors will not match the translucency of the stone. Acrylics and epoxies have a chemical attraction to the stone and will provide the tightest seams. This is very important for mitered edge details because, when properly done, the adhesive is not visible.



7. POLISHING/EDGE DETAIL:

Polishing: It is very important to select the right polishing pads for Aurea Stone quartz. Please note: Do not use polishing pads that have colored resin. While such pads can work well with granite, they require an excessive amount of water and can transfer the resin's color to the edges of Aurea Stone quartz. We recommend using only white resin pads for all applications, whether hand polishing, or using an automatic edge polisher or a CNC machine.



1. Rigid Backer Pads: Flexible backers work well for concave profile edges, such as ogee edges. The need to use a flexible backer on most other profiles is not needed. Keep in mind automatic edge machines all use extremely rigid polishing tools and backer pads; these machines will produce a far better edge than what many fabricators can do by hand.

2. Polishing Pads: Common problems include both using too much water and not enough water, and not using the proper polishing technique. The Sequence of grits shown above for both Polished and Hone finishes are a guideline for achieving a polish equal to the factory finish.

- When too much water is used while applying pressure to the center of the pad, the water gets trapped in between the pad and the stone, causing a hydroplaning effect. This causes the water to escape to the outer edges of the pad, making it difficult for the polishing pad to effectively polish the edge or edge's surface. This will result in a spotty polish.

- When too little water is used, the polishing pads tend to flex or cup outwards around the center of the pad (mainly with higher grits). This causes the outer edges of the polishing pad to touch the surface, but will not allow the center of pad to polish. The tendency is to apply more pressure, which also leaves a spotty polish.
- When polishing the edge detail on Aurea Stone quartz, be sure to use the entire polishing pad surface, which is stated in the tips below. When polishing any bullnose edge, it is important to use the center of the pad only as it will give the proper water distribution for the pad and the stone.
- Never use a final buffing pad for Aurea Stone quartz. These come in black and buff and contain different chemicals and no diamonds and are meant to bring granite to a high polish. The final step for polishing Aurea Stone quartz is to use a grit level of 3000.
- Dry polishing the edge profile may cause overheating of Aurea Stone quartz. Excessive heat to the stone can alter the physical properties of the slab which can cause micro-fissures not visible to the naked eye. This can lead to chipping, discoloration and a poor, uneven polish. Never use dry polishing pads on Aurea Stone quartz.
- Aurea Stone quartz should never be polished on the top surface of the manufacturing finish.

Polishing Tips: When polishing any edge detail on Aurea Stone quartz you should use the proper amount of water. Polishing pads with grit levels of 50-400 have a higher concentration of diamonds and require less water; a trickle from your center water feed will be sufficient. Higher 800-1,500 grit pads have less diamond content and require more water. Using the proper water flow allows the pads to work faster.

Polishing should be done in circular motion, utilizing the edges of the polishing pad as it rotates from the top half of the edge to the bottom half as it moves down the piece. While polishing, you will feel resistance with each grit level, which is the diamonds polishing. Allowing the diamonds to do the work requires less pressure from the polisher. When resistance is no longer felt, it is time to change the polishing pad to the next grit. Follow this procedure until you arrive at the final grit level.



3. Air/Electric Polisher RPM:

The rpm for all air/electric polishers should be between 2,800-4,000. It is best to start at 2,800 rpm and increase as needed. Anything over 4,000 rpm could result in burning or smearing the resin on your edge detail. This is where the color of the resin on the polishing pad makes a big difference. If the edge is burned with a white resin polishing pad, it can be easily removed with denatured alcohol. However, the dye in colored resin polishing pads can create a major problem when working with white, translucent quartz.

FABRICATION GUIDE: FABRICATING AUREA STONE

EDGE DETAIL:

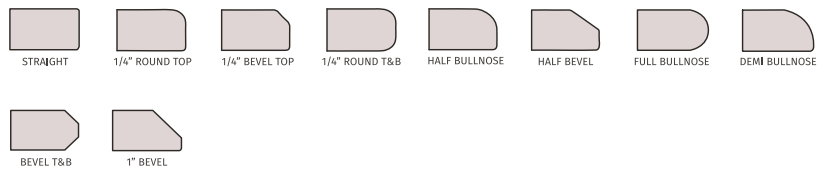
When profiling edges on Aurea Stone quartz, it is best to use a machine with diamond tooling to produce the desired shape. A CNC machine, and other specific edge profiling machines, are recommended for producing consistent edge profiles. Some standard/basic edges can be achieved using only hand tools and diamond cup wheels. A combination of both machine and hand labor produces the best results when creating edge detail.

- **Edges:** We recommend that all outer edges of the countertop be beveled, which will improve the material's resistance to chipping and also remove sharp edges and thereby prevent possible cuts. Keep in mind that the larger the bevel, the greater resistance to impact. A hidden edge, which is typically against a wall, should have a minimum bevel of 1mm; an exposed edge should have a minimum bevel of 3mm. All cutouts, whether exposed or hidden, follow the same rules regarding the size of the bevel.

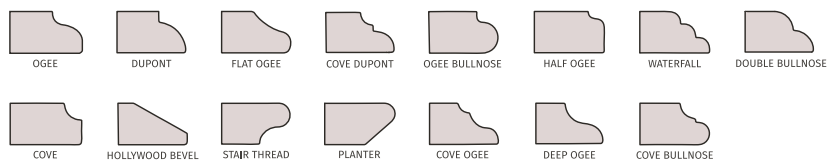
- **Aurea Stone quartz edge details include a wide variety of profiling edges.** Many manufacturers produce profiling wheels for both CNC machines and handheld routing machines. All profiling wheels will work Aurea Stone quartz, although some exotic edges require a thicker edge.



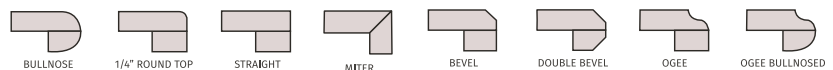
POPULAR EDGES



PREMIUM EDGES



LAMINATED EDGES



INSTALLATION:

It is important that cabinets are leveled, and shimmed where necessary, to 1/16" tolerances prior to final countertop installation. Check all cabinets for level.

- After the support system is installed and leveled, installation of the Aurea Stone quartz countertops can begin. Measure cabinets and verify that the pieces will fit before placing the Aurea Stone quartz on the countertop.
- Bring the pieces in one at a time, and test fit them in their proper place on the cabinets. Adjust as necessary to ensure a good fit and proper alignment. Always make any necessary cuts outside, cutting wet to control dust.
- Space should always be allowed as Aurea Stone quartz needs room to expand. Each countertop requires at least 1/8" at each wall for expansion and contraction. Fill the gap between the wall and countertop with silicone.
- After all of the pieces have been adjusted for fit, you will need to attach the tops to the cabinets and support strips using caulk that is 100 percent silicone. Apply silicone caulk approximately every 8"-12" around the perimeter of the cabinet, and at the cross supports. Do not use epoxy adhesive, acrylic adhesive or the product Liquid Nails. The purpose of the silicone is to allow the top to expand/contract as needed.
- Use extra silicone on all corners and joints, and around all cutouts.



SEAMS:

- Seam tolerance is generally the same for all hard-surface countertop material. The recommended seam width is 1/16"; recommended seam tolerance is +/- 1/32". Both pieces should be level across a seam, with a tolerance of +/- 1/32". One side of a seam can be slightly raised, or one side can be slightly lowered, but not both.
- The two edges to be seamed must be cut straight and true. If a waterjet is used for cutting, the edges should be ground flat to remove any grooves from the cutting process.
- Test fit to make sure that the two pieces to be seamed together form a tight, level and uniform seam before applying adhesive. Shim and level pieces if required. Also, check to make sure the color and vein pattern matches across the seam.
- Always clean the joined edges with denatured alcohol and wipe clean with a white cloth. Apply strips of tape to the top and underside of the two pieces to be joined/seamed. Put tape on each side of the two pieces, leaving about 1/4" between the pieces. This prevents adhesive from dripping into the cabinets and allows for easy clean-up on the top surface.

Tip:

If possible, use a pneumatic seam setter with a vacuum and posts/pins to level and to make seams as tight and inconspicuous as possible. Several manufacturers sell this equipment. Seams should never be more than 1/16" wide.

ADHESIVE:

Seams should be made using a pre-mixed cartridge adhesive, which can be either acrylic or a two-part epoxy system.

Insert the adhesive cartridge in the seaming gun with a fresh, disposable mixing tip. Always purge the adhesive (generally the length of the tip you are using) with your cartridge adhesive system to ensure that the adhesive and hardener is properly mixed before seaming the material. After each use, remove and replace the tip, otherwise the remaining adhesive will cure in the tip.

Remove the used tip and replace the original cap for an airtight seal. The normal cure time for acrylics is about 15-20 minutes in 70° F. During the summer month's hot temperatures, work time is reduced. During winter's colder temperatures, work time is increased. The cure time for two-part epoxy systems can be anywhere from 2-6 hours.

SINKS:

We recommend that the sink manufacturer's guidelines be followed when installing all sinks, whether they are top mount or undermount.

- We recommend that all sink installations be fully structurally supported without reliance on the Aurea Stone quartz as a form of support.
- Under no conditions can mechanical fasteners (screws, nails, etc.) be affixed directly to Aurea Stone quartz. These items will rust with moisture and the rust will bleed through the stone.
- For under mount sink installations, follow the minimum edge profile recommendations around the cutout to prevent chipping. Fasteners or clips should be used along with silicone.
- All sinks must be sealed to the countertop using 100 percent silicone.
- Always follow the sink manufacturer's recommendations. Some sinks may require support systems like cradles, rail systems and sink setters.

INSTALLATION OF BACKSPLASH MATERIALS:

- A backsplash is typically 3" in height unless a full backsplash is desired. The backsplash should always be cut from the same lot or batch as the countertop material.
- Cut all backsplash material to the sizes required for the project. The top edge and any exposed ends should be polished. Generally, the backsplash has a flat top with a slightly beveled edge.
- Dry-fit the backsplash to make sure that all joints and edges are tight. Apply a continuous 1/8" bead of silicone to the bottom of the backsplash that will be adhered to the countertop surface. Then place dabs of 100-percent silicone every 4"-6" on the back, unpolished side of the stone and adhere it to the wall.
- Do not hard-seam backsplash to countertop.
- Aurea Stone can be installed as a backsplash behind a gas, induction or vitroceramic cooktops. Install cooktops following the manufacturer's instruction, paying special attention to insulation requirements and materials.

The cutout requires a minimum distance of 60mm to the backsplash and 80mm to the edge.

All cooktops requires a minimum distance of 120mm from the perimeter of the nearest burner, to any vertical application to avoid heat transfer.

For L or U-shaped countertops, cooktop requires no less than 25mm to the corner.



WALL APPLICATIONS (VERTICAL): .

Aurea Stone Quartz can be used for all internal cladding of walls and vertical applications. The installation of vertical panels varies from location to location. Check with your local building codes. When designing and installing vertical panels and cladding, it is necessary to take the weight of the product into account and the services of an experienced structural engineer should be sought during the designing and installation phases.

Installation Guidelines:

1. Measure for any cutouts required on the water line wall of the shower. This is the wall with the Tub Diverter, Bathtub Faucet and the Shower head. Use a tape measure to determine where you need to cut holes in the Aurea Stone slab for the pipe cut-outs. Mark the slab and use the diamond core bit to cut out the necessary holes. Allow a ½" clearance around all pipe cutouts.
2. Install the front and back slabs first before you install the side pieces. Apply a setting epoxy adhesive to the back of the slab that you are adhering to the wall. Use a ¼" notched trowel to spread the setting epoxy onto the back of the slab. This may require more than one person for the heavier/larger slabs. Maneuver the slab into position. Place it firmly against the following substrates, Cement board, Waterproofed plywood or existing Backer board on the walls. (if using existing backer board make sure it is free of and defects)
3. Apply firm pressure and move the slab up and down and side to side as much as you can to force the epoxy glue to completely bond with the wall/substrate behind and the slab itself. Once finished, allow the slab to come to its final resting place on top of the shower pan. Provide a minimum of 1/8" expansion joint (to be caulked with 100% silicone) at the bottom/top of the slabs, which would be the shower pan and ceiling. Use 1/8" shims at the top and bottom of slabs to get the proper spacing for expansion joints. Repeat the process with all other wall panels that are needed to finish the wall surround.
4. Epoxy or "hard" seams are not recommended for vertical wall applications. All corners should be caulked with 100% silicone caulk. Allow 1/8" minimum expansion joint between adjacent Aurea Stone slabs. Use 1/8" shims between the adjacent slabs to get the proper spacing for expansion joints.
5. Apply the proper braces to support the wall panel until setting epoxy adhesive is completely cured. Keep the braces in place for at least 24 hours or according to the drying time on your setting epoxy adhesive.
6. Remove the braces. Apply silicone caulking to the inside corners and fill the gaps between the slabs. Also, silicone the area where the slabs meet the shower pan and ceiling. Allow the caulking to dry for 72 hours before using the shower.



PROPER CLEANING & MAINTENANCE OF AUREA STONE:

Aurea Stone quartz requires very little maintenance to keep the surface looking its best. It is a non-porous material, therefore cleaning with a damp cloth and warm clear water is all that is required.

DAILY CLEANING

For routine cleaning, simply wipe down your surface with a damp cloth or paper towel and a pH neutral cleaner for natural stone.

The pH activity level is what determines the best maintenance cleaner for Aurea Stone. For example, most neutral cleaners have a pH balance of 7; however, some neutral cleaners are stronger than others because they have higher pH activity levels. Some neutral cleaners are not active enough to thoroughly clean the quartz surface, while some neutral cleaners are too active for it.

To keep your worktop beautiful, spot free and shiny you can use a wide selection of available cleaners and their respective pH levels, since NEOS resists ranges between pH1 and pH13, making it the only protectant resistant to a broad list of chemicals and safe from acid corrosion.

Granite cleaners that are available at Lowe's, Home Depot or local grocery stores are typically pH neutral and can safely be used to clean Aurea Stone. Make sure about its pH before using it.

PERIODIC CLEANING

It is recommended that quartz surfaces subject to heavy traffic of use be treated (once in a month besides daily cleaning) with a heavy duty intensive and neutral cleanser, which is stronger than a daily cleaning product. Such type of a periodic cleaning will provide mirror gloss effect.

In the use of industrial cleaning machines, make sure that soft pads are used on the machines while strictly avoiding wax strippers. Customers that use industrial-cleaning machines should always use appropriate types of pad and brush. For the dense dirtiness to resolve, professional cleaning products are applied by using a cleaning machine with plastic brush or soft pad. Following the application of the cleanser, rinse the surface thoroughly with water.

- Installers and fabricators should avoid using acetone on Aurea Stone as it will leave a film on the countertop surface. We recommend using denatured alcohol if needed. Acetone is harmful to resins and should never be used as a cleaner.
- Soap and water can also be used, but the surfactants in some soaps will leave a greasy film on the surface. The film can feel sticky and is very difficult to remove.
- Aurea Stone quartz is heat and scratch resistant, but not heat- and scratch-proof. Never put hot pots directly on the countertop surface; always use hot pads or trivets.
- Aurea Stone quartz does not require any waxes or sealants because it is a non-porous surface. It retains its lustrous gloss and smooth surface without the need for polish or sealant.
- Do not use bleach or any cleaners that contain bleach.
- Granite cleaners that are available at Lowe's, Home Depot or local grocery stores are typically pH neutral and can safely be used to clean Aurea Stone.



CERTIFICATIONS:

Aurea Stone is internationally certified to ensure maximum safety and protection. Such certificates offer consumers the assurance that Aurea Stone is a safe, top-quality material. Our certificates offer a 100% guarantee.



NSF

With the NSF certificate, Aurea Stone is deemed to be a safe material for direct contact with all types of food. This certificate is endorsed by esteemed organizations such as the FDA (Federal Drug Administration) and WHO (World Health Organization)



GREENGUARD

This certificate proves that Aurea Stone does not generate any substance that is harmful to the environment. It also certifies the use of our surfaces in closed areas.



GREENGUARD GOLD

Aurea Stone has also been awarded the “Greenguard Children & Schools Certificate,” which confirms maximum safety in its applications for schools and universities.

AUREA STONE: WARRANTY

When considering investing in a premium quartz surface like Aurea Stone, there is one thing you should know: the surface you choose is only as good as the company that stands behind it, especially when it comes to our customer service. At Aurea Stone we know that once the installation is complete, our job has just begun.

GUARANTEED COVERAGE

This warranty applies only to Aurea Stone engineered quartz products.

Aurea Stone is exclusively suitable for interior residential applications.

Validity of the warranty:

25-year Residential Limited Warranty. Aurea Stone guarantees that our material will be free from manufacturing defects during the indicated period.

Thanks to its beyond-belief technology NEOS, Nano Enhancement of Surfaces, an innovative high-performance stain and substance repellent technology developed for Aurea Stone surfaces, we are the only brand to include a **Lifetime Stain Warranty**.

The following warranty is offered by Aurea Stone on its quartz countertop materials. No other entity is authorized to offer any warranty agreement related to Aurea Stone quartz.

To use the warranty, one must register the product at <https://aureastone.com/Australia/warranty-activation/> and show the original purchase receipt. In the case a buyer purchasing a new home built with Aurea Stone counters, Aurea Stone honors the house purchase contract as an original receipt. Owners are allowed a maximum of 6 months, from the receipt date, to register their warranty.

Once registered, the warranty is personal and non-transferrable. The warranty holder is the physical person that registers his/her personal information in the indicated link above. The named beneficiary agrees to allow any and all authorized employees of Aurea Stone to enter the property to examine the defective product and take pictures of the material and any installation imperfections.

The warranty covers only manufacturing defects found to adversely affect the installation of Aurea Stone in residential applications. Aurea Stone has the right to repair or replace any material it deems defective, at its sole discretion.

To obtain assistance during this warranty, you must contact the establishment from which your purchased Aurea Stone or alternatively, you may contact Aurea Stone directly.

The warranty applies only to material that has been used and maintained by following the care and maintenance rules, as prescribed herein by Aurea Stone.

EXCLUSIONS

1. Those products that have not been completely paid are excluded from the warranty.

2. Products installed in exterior applications are not covered. Neither are damages caused by incorrect use, abuse, or exposure to excessive heat, weather or ultraviolet light. Also excluded are damages caused by physical or chemical abuse, or by inappropriate care or maintenance.

3. Because Aurea Stone does not have control over fabrication, manipulation, cutting or installation, any incidental and consequential damages arising from these activities produced are not covered. These items are understood and agreed to be the responsibility of the independent fabricators and installers involved in each project.

4. This warranty does not cover any fabrication or installation costs, nor the incidental costs incurred by other trades, including but not limited to plaster work, plumbing, electrical or structural work, etc.

5. Aurea Stone is not responsible for the cost of transporting any replacement material to the destination.

6. The warranty does not cover installed products with manufacturing defects that were, or should have been, known or visible to installers at the time of installation, including, without any limitation, possible differences of color or tone.

7. Any and all installations in flooring applications, wall cladding or similar, as well as commercial uses are expressly excluded.

8. Aurea Stone is not responsible for any damages arising from causes beyond its control, including but not limited to, acts of God, any and all problems associated with architectural design or structural engineering, structural movement, acts of vandalism or accidental damage.

FABRICATOR NAME:

FABRICATOR SIGNATURE:

DATE:

DISTRIBUTOR NAME:

DISTRIBUTOR SIGNATURE:



AUREA | STONE